



PASTIS

TECHNISCHES BLATT
SCHEDA TECNICA
DATA SHEET
FICHE TECHNIQUE

PASTIS

DESIGN GEBRÜDER THONET VIENNA GmbH (GTV), 2014



Kaffeetisch mit quadratischem Pfeiler, Fuß und quadratischer Tischplatte. Aus Schwarz lackiertem Metall oder in bronzefarbener Ausführung. Platte überzogen mit Laminat oder furniert Eiche Natur/ gebeizt, auch verfügbar mit bronzefarbener Umrandung.

Tavolo da bar con montante, piano e base quadrati. In metallo verniciato nero o con finitura bronzata. Top rivestito in laminato o impiallacciato rovere naturale o tinto, disponibile anche con ghiera perimetrale in finitura bronzata.

Bar table with square post, top and base. In black painted metal or with bronze finish. Top covered in laminate or natural/ stained oak veneer, also available with an edge ring with bronze finish.

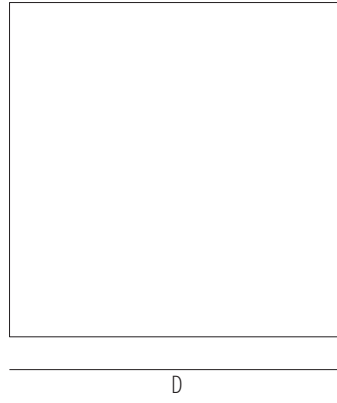
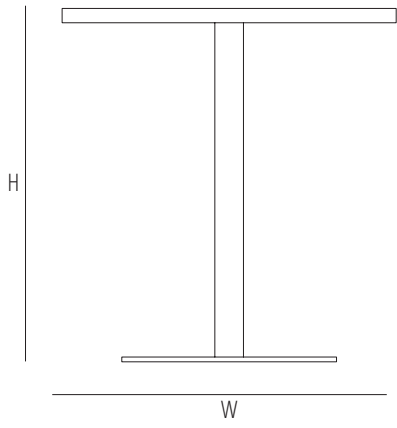
Table de bar avec pied central, base et plateau carrés. En métal peint en noir ou avec finition bronzée. Plateau recouvert de laminé ou plaqué chêne naturel ou teinté, également disponible avec un rebord périmétral en finition bronzée.



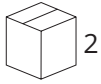
TVPASTBAR

Dimensions mm.

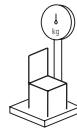
height 760 | width 700 | depth 700



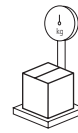
	H	W	D	SH	AH
mm	760	700	700		
inch	29,9	27,5	27,5		



BASE 0,16
TOP 0,02



BASE 25
TOP 17



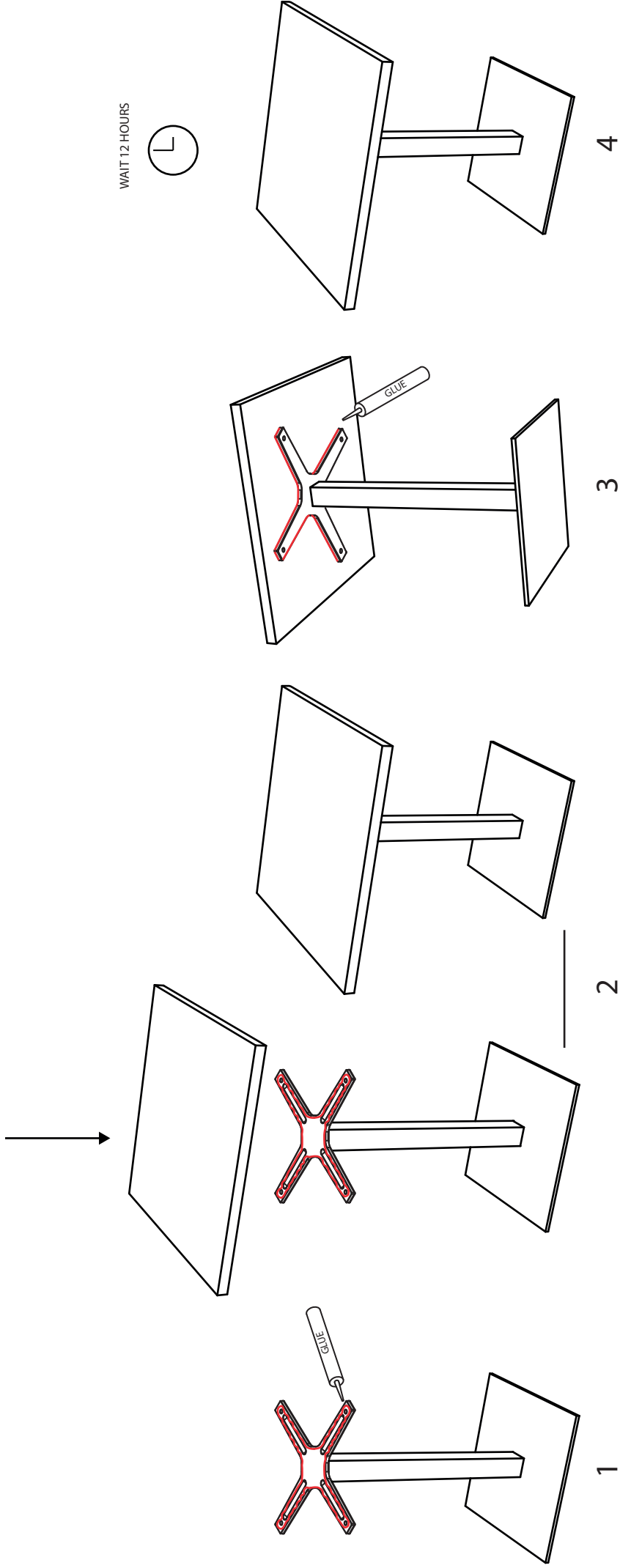
BASE 27
TOP 18



BASE mm - inch
h 770 - 30,3
w 450 - 17,7
d 470 - 18,5

TOP mm - inch
h 40 - 1,5
w 700 - 27,5
d 700 - 27,5

assembly instructions



Gebrüder Thonet Vienna GmbH
Prinz Eugen Straße 42
1040 Wien (AT)

www.gebruederthonetvienna.com

Offices of the trademarks' licensee
Production Furniture International S.p.A.
Via Foggia, 23/H
10152 Torino (TO) Italy

Phone: 0039 011 0133330 - info@gebruederthonetvienna.com