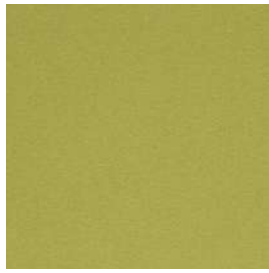


Canvas 2	Cat. C
Coda 2	Cat. D
Divina 3	Cat. C
Divina Melange 3	Cat. C
Fuse	Cat. D
Harald 3	Cat. C
Hero	Cat. B
Merit	Cat. B
Noise	Cat. D
Pilot	Cat. E
Raas	Cat. C
Re-wool	Cat. B
Ria	Cat. E
Safire	Cat. C
San	Cat. C
Skye	Cat. C
Steelcut 2	Cat. C
Steelcut Trio 3	Cat. C
Twill Weave	Cat. C
Vidar 3	Cat. C



Hero Col. 201



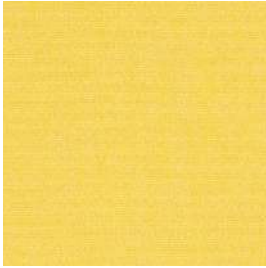
Hero Col. 441



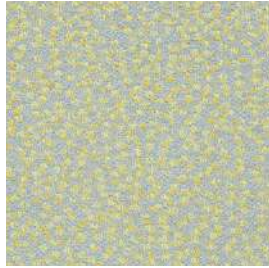
Hero Col. 601



Steelcut Trio 3 Col. 686



San Col. 430



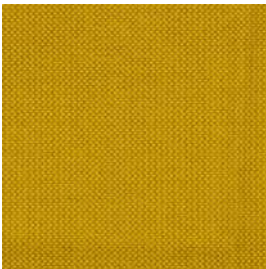
Ria Col. 441



Steelcut Trio 3 Col. 645



San Col. 580



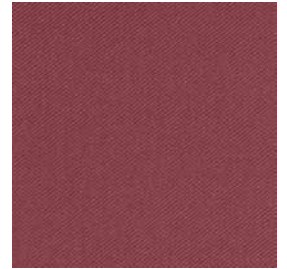
Merit Col. 025



Steelcut 2 Col. 435



Hero Col. 511



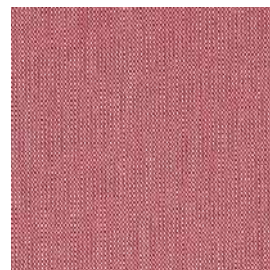
Twill Weave Col. 570



Divina Melange 3 Col. 427



Harald 3 Col. 443



Steelcut Trio 3 Col. 636



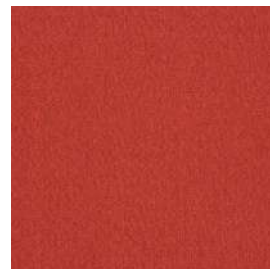
Vidar 3 Col. 582



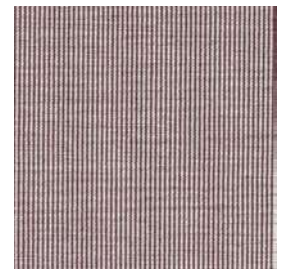
Merit Col. 024



Twill Weave Col. 430



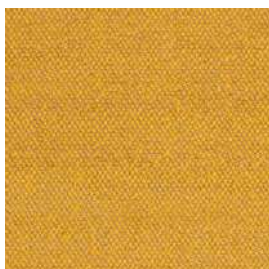
Skye Col. 581



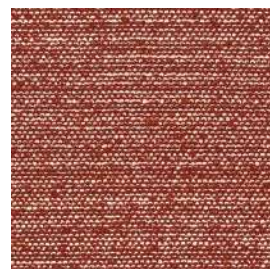
Fuse Col. 631



Safire Col. 016



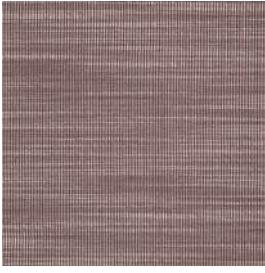
Safire Col. 017



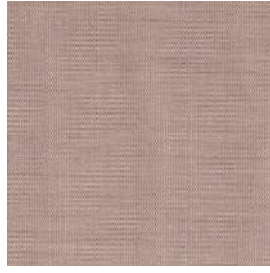
Safire Col. 013



Pilot Col. 582



Raas Col. 642



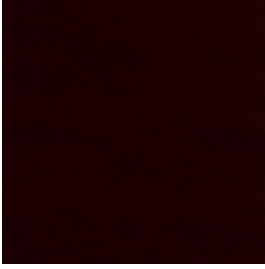
Canvas 2 Col. 614



San Col. 350



San Col. 540



Harald 3 Col. 582



Twill Weave Col. 530



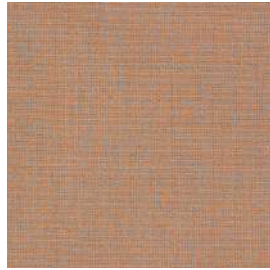
Divina 3 Col. 552



Raas Col. 552



Vidar 3 Col. 693



Skye Col. 551



Twill Weave Col. 550



Harald 3 Col. 512



San Col. 630



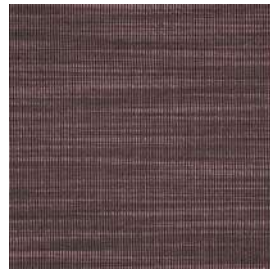
Re-wool Col. 558



Coda 2 Col. 610



Ria Col. 551



Raas Col. 662



Noise Col. 662



Re-wool Col. 648



Twill Weave Col. 280

Coda 2 Designed by Norway Says & Per Bjørnsen

Application Offices, hotels, institutions, domestic use. Great durability.
Description 90% new wool, 10% nylon. Width app. 55 inches (140 cm). Weight app. 860 g/lin.m. Foreign fibres may occur in light colours. Material dyed. Colour differences may occur.

Abrasion: App. 100,000 rubs acc. to the Martindale method EN ISO 12947.
Lightfastness (ISO) 5-7. Pilling (EN ISO) 4. Fastness to rubbing (ISO) dry 4-5, wet 4. Airflow 200 Pa s/m. Flame resistance: AS/NZS 3837. BS 5852 Crib 5 with treatment. BS 5852 part 1. EN 1021-1/2. IMO FTP Code 2010:Part 8. NF D 60 013. NFPA 260. SN 198 898 5.3 with treatment. UNI 9175 11M. US Cal. Bull. 117-2013. (Copy of test report available).

Care Please see www.kvadrat.dk/care-and-maintenance.

Divina Melange 3 Designed by Finn Sködt

Application Offices, hotels, institutions, domestic use.
Description 100% new wool. Width app. 59 inches (150 cm). Weight app. 840 g/lin.m. Piece dyed. Colour differences may occur.

Abrasion: App. 45,000 rubs acc. to the Martindale method EN ISO 12947.
Lightfastness (ISO) 5-7. Pilling (EN ISO) 3. Fastness to rubbing (ISO) dry 4-5, wet 4. Sound absorption (EN ISO 354) 0.60/Class C (flat), 0.70/Class C (waved). Airflow 678 Pa s/m. Flame resistance: AS/NZS 1530.3. BS 5852 Crib 5. BS 5852 ignition source 3. BS 5852 Part 1. BS 5867 Part 2 Type B. EN 1021-1/2. EN 13501, C-s1, d0. IMO FTP Code 2010:Part 8. NF D 60 013. NFPA 260. SN 198 898 5.3 with treatment. UNI 9175 11M. US Cal. Bull. 117-2013. ÖNORM B1 / Q1. (Copy of test report available).

Care Please see www.kvadrat.dk/care-and-maintenance.

Noise Designed by Raf Simons

Application Offices, hotels, institutions, domestic use. Great durability.
Description 96% new wool, worsted. 4% nylon. Width app. 55 inches (140 cm). Weight app. 715 g/lin.m. Yarn dyed. Colour differences may occur.
Abrasion: App. 30,000 rubs acc. to the Martindale method EN ISO 12947.
Lightfastness (ISO) 6-7. Pilling (EN ISO) 4. Fastness to rubbing (ISO) dry 4-5, wet 4-5. Flame resistance: BS 5852 Crib 5 with treatment. BS 5852 part 1. DIN 4102 B2. EN 1021-1/2. IMO FTP Code 2010:Part 8. NF D 60 013. UNI 9175 11M. US Cal. Bull. 117-2013. (Copy of test report available).

Care Please see www.kvadrat.dk/care-and-maintenance.

Ria Designed by Raf Simons

Application Offices, hotels, institutions, domestic use. Great durability.
Description 84% new wool, worsted. 12% viscose. 4% nylon. Width app. 55 inches (140 cm). Weight app. 980 g/lin.m. Yarn dyed. Colour differences may occur.
Abrasion: App. 50,000 rubs acc. to the Martindale method EN ISO 12947.
Lightfastness (ISO) 7. Pilling (EN ISO) 4. Fastness to rubbing (ISO) dry 3-5, wet 3-5. Flame resistance: BS 5852 Crib 5 with treatment. BS 5852 part 1. EN 1021-1/2. IMO FTP Code 2010:Part 8. NF D 60 013. UNI 9175 11M. US Cal. Bull. 117-2013. (Copy of test report available).

Care Please see www.kvadrat.dk/care-and-maintenance.

Canvas 2 Designed by Giulio Ridolfo

Please see description on Black/White Card

Harald 3 Designed by Raf Simons and Fanny Aronsen

Please see description on Black/White Card

Raas Designed by Doshi Levien

Please see description on Black/White Card

Safire Designed by Sahco

Please see description on Black/White Card

Steelcut 2 Designed by Frans Dijkmeijer and Giulio Ridolfo

Please see description on Black/White Card

Twill Weave Designed by Jonathan Olivares

Please see description on Black/White Card

Divina 3 Designed by Finn Sködt

Application Offices, hotels, institutions, domestic use.
Description 100% new wool. Width app. 59 inches (150 cm). Weight app. 840 g/lin.m. Piece dyed. Foreign fibres may occur in light colours. Colour differences may occur.

Abrasion: App. 45,000 rubs acc. to the Martindale method EN ISO 12947.
Lightfastness (ISO) 5-7. Pilling (EN ISO) 3. Fastness to rubbing (ISO) dry 4-5, wet 4. Sound absorption (EN ISO 354) 0.60/Class C (flat), 0.70/Class C (waved). Airflow 678 Pa s/m. Flame resistance: AS/NZS 1530.3. BS 5852 Crib 5. BS 5852 Part 1. BS 5867 Part 2 Type B. EN 1021-1/2. EN 13501, C-s1, d0. IMO FTP Code 2010:Part 8. NF D 60 013. NFPA 260. UNI 9175 11M. US Cal. Bull. 117-2013. ÖNORM B1 / Q1. (Copy of test report available).

Care Please see www.kvadrat.dk/care-and-maintenance.

Merit by Maharam Designed by Maharam Design Studio

Application Offices, hotels, institutions, domestic use. Great durability.
Description 76% post-consumer recycled polyester, 24% polyester. Stain resistant (PFOA free). Width app. 54 inches (137 cm). Weight app. 500 g/lin.m. Yarn dyed. Colour differences may occur.
Abrasion: App. 85,000 rubs acc. to the Martindale method EN ISO 12947. App. 100,000 double rubs acc. to Wyzenbeek method. **Lightfastness (ISO) 6-7. Pilling (EN ISO) 4. Fastness to rubbing (ISO) dry 4-5, wet 4-5. Flame resistance:** BS 476 part 7 + 6 with treatment. BS 5852 Crib 5 with treatment. BS 5852 part 1 with treatment. EN 1021-1/2. US Cal. Bull. 117-2013. (Copy of test report available).

Care Please see www.kvadrat.dk/care-and-maintenance.

Pilot Designed by Raf Simons

Application Offices, hotels, institutions, domestic use. Great durability.
Description 82% new wooll, worsted. 10% polyester. 8% nylon. Width 55 inches (140 cm). Weight app. 770 g/lin.m. Yarn dyed. Colour differences may occur.
Abrasion: App. 70,000 rubs acc. to the Martindale method EN ISO 12947.
Lightfastness (ISO) 7. Pilling (EN ISO) 4. Fastness to rubbing (ISO) dry 4-5, wet 3-5. Flame resistance: BS 5852 Crib 5 with treatment. BS 5852 part 1. DIN 4102 B2. EN 1021-1/2. IMO FTP Code 2010:Part 8. UNI 9175 11M. US Cal. Bull. 117-2013. ÖNORM B1 / Q1. (Copy of test report available).

Care Please see www.kvadrat.dk/care-and-maintenance.

Skye Designed by Georgina Wright

Application Offices, hotels, institutions, domestic use. Great durability.
Description 90% new wool, worsted, 10% nylon. Width app. 55 inches (140 cm). Weight app. 580 g/lin.m. Yarn dyed. Colour differences may occur.
Abrasion: App. 100,000 rubs acc. to the Martindale method EN ISO 12947.
Lightfastness (ISO) 6. Pilling (EN ISO) 4. Fastness to rubbing (ISO) dry 4-5, wet 4-5. Flame resistance: AS/NZS 3837 Class 2. BS 5852 Crib 5 with treatment. BS 5852 part 1. EN 1021-1/2. IMO FTP Code 2010:Part 8. NF D 60 013. SN 198 898 5.3 with treatment. UNI 9175 11M. US Cal. Bull. 117-2013. (Copy of test report available).

Care Please see www.kvadrat.dk/care-and-maintenance.

Fuse Designed by Raf Simons

Please see description on Black/White Card

Hero Designed by Patricia Urquiola

Please see description on Black/White Card

Re-wool Designed by Margrethe Odgaard

Please see description on Black/White Card

San Designed by Louise Sigvardt

Please see description on Black/White Card

Steelcut Trio 3 Designed by Frans Dijkmeijer and Giulio Ridolfo

Please see description on Black/White Card

Vidar 3 Designed by Raf Simons and Fanny Aronsen

Please see description on Black/White Card